

# Our Silence Speaks for Our Perfection



**Diesel Generating Sets**

Range : 12.5 kVA ~250 kVA

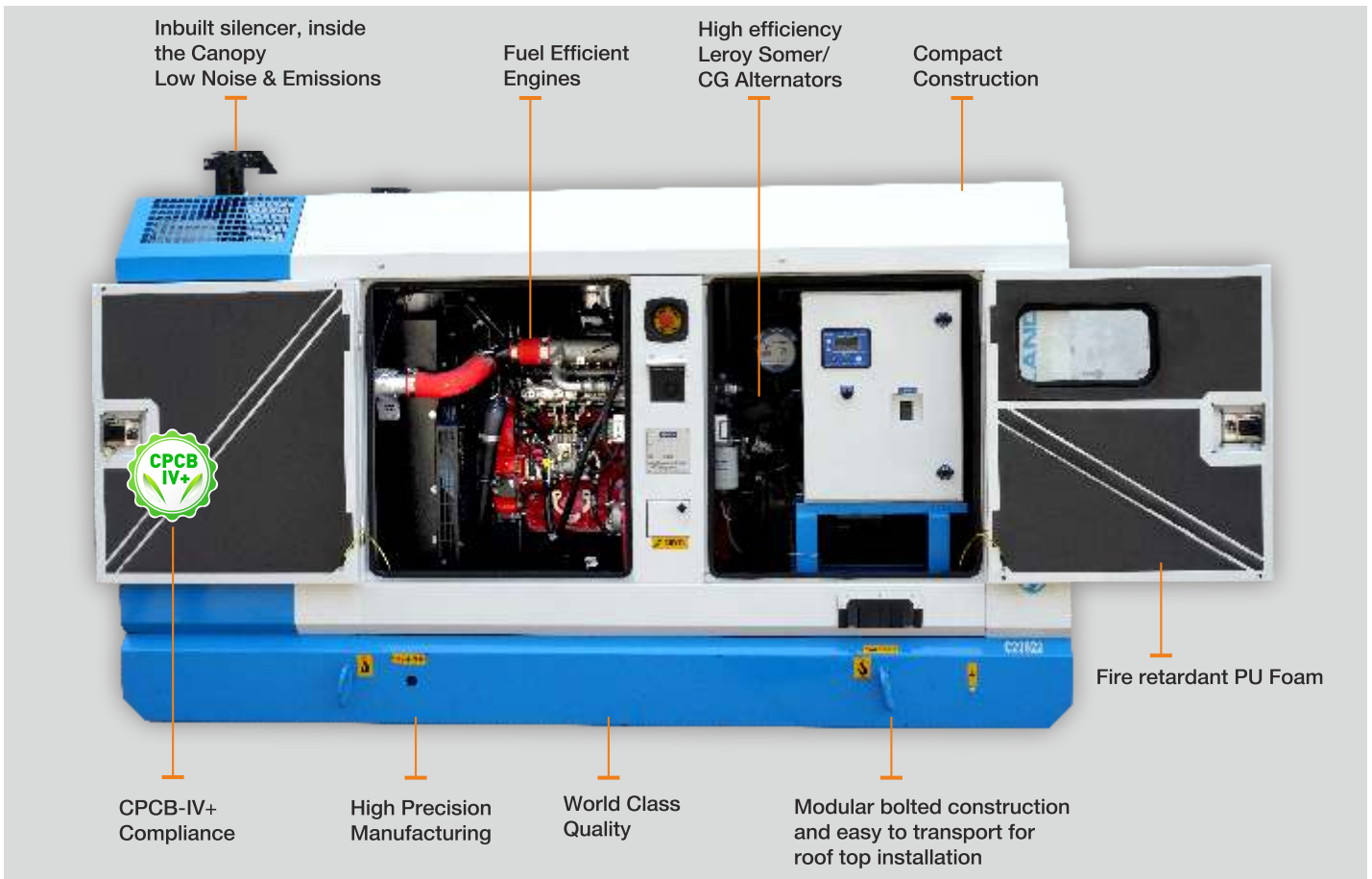


CSH is a leading manufacturer of Silent DG Sets in India. CSH Silent DG Sets are manufactured at the state of art manufacturing plant built over sprawling 10 acre complex located at Pant Nagar, Uttarakhand, India.

The manufacturing plant is equipped with the latest machinery such as CNC punch press, fully automated spray treatment system, automated powder coating applicators and computerised load testing equipment. All the products manufactured conforms to the stringent quality control norms and are thoroughly tested for their performance.





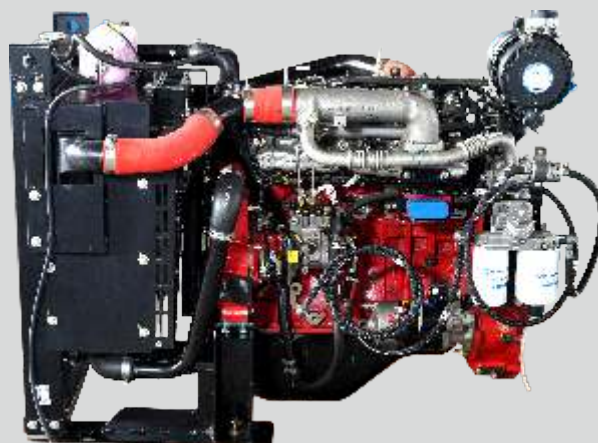


## Ashok Leyland Engine

Designed for Prime/Standby ratings



**BETTER FUEL EFFICIENCY**  
Low cost of ownership



**LOWER LUBE OIL SUMP CAPACITY**  
Lower operational cost



**GOOD BLOCK LOADING CAPABILITY**  
Sturdy in construction tough and resilient



**LONGER OIL CHANGE INTERVAL**  
Extended uninterrupted operational period



**ECO FRIENDLY**  
Meeting stringent emission norms

SILENT GENSETS

CSH Gensets Powered by AL engine - Technical Details

SDG MODEL	Unit	CSH-A-12.5	CSH-A-15	CSH-A-20	CSH-A-25	CSH-A-30	CSH-A-40	CSH-A-45		CSH-A-50	CSH-A-60	CSH-A-82.5	CSH-A-100	CSH-A-125	CSH-A-160	CSH-A-180	CSH-A-200	CSH-A-250	
<b>Engine Details</b>																			
Engine Model		H2G4DM15	H2G4DM15	H2G4DM20	P15G4DE25	P15G4DE30	H4G4DE40	H4G4DE45		H4G4DE60	H4G4DE60	H4G4DE82	H4G4DE100	H6G4DE125	H6G4DE160	H6G4DE180	A6G4DE200	A6G4DE250	
Engine Rated kW/Engine Rated HP	kW/HP	14.1/18.9	14.1/18.9	18 / 24	25 / 33.3	27.5 / 36.8	38 / 50.95	42.5/ 56.99		54 / 72.4	54 / 72.4	78 / 104.5	94 / 126	116 / 155.5	147 / 197	165 / 221.2	178 / 237	223/303	
Aspiration		NA	NA	TC	TCIC	TCIC	TCIC	TCIC		TCIC	TCIC	TCIC	TCIC	TCIC	TCIC	TCIC	TCIC	TCIC	
No. of cylinders & configuration		2, In line	2, In line	2, In line	3 In line	3 In line	4, In line	4, In line		4, In line	4, In line	4, In line	4, In line	6, In line	6, In line	6, In line	6, In line	6, In line	
Bore x Stroke	mm	104 x 118	104 x 118	104 x 118	80 x 98	80 x 98	104 x 113	104 x 113		104 x 113	104 x 113	104 x 118	104 x 118	104 x 118	104 x 118	104 x 118	112 x 135	112 x 135	
Displacement	Liters	2.004	2.004	2.004	1.478	1.478	3.84	3.84		3.84	3.84	4.008	4.008	6.011	6.011	6.011	7.98	7.98	
Compression ratio		16.5 ± 0.5 : 1	16.5 ± 0.5 : 1	16.5 ± 0.5 : 1	16.5 ± 0.5 : 1	16.5 ± 0.5 : 1	16.5 ± 0.5 : 1	16.5 ± 0.5 : 1		16.5 ± 0.5 : 1	16.5 ± 0.5 : 1	16.5 ± 0.5 : 1	16.5 ± 0.5 : 1	16.5 ± 0.5 : 1	16.5 ± 0.5 : 1	16.5 ± 0.5 : 1	17.5 ± 0.5 : 1	17.5 ± 0.5 : 1	
Fuel Consumption* (75% Load)	Lit/Hr	2.7	3.19	4.0	4.8	5.3	7.25	8.1		8.75	10.05	14.6	17.0	21.1	26.4	30.2	32.0	39.3	
Lube Oil Capacity approx.	Liters	6.5	6.5	6.5	4.5	4.5	12	12		12	12	12	12	18	18	18	28	28	
Coolant Capacity approx.	Liters	8	8	8	9	9.5	11.5	11.5		14.5	14.5	16.5	18.5	20.5	22.5	24	55	55	
Governing Class		A1	A1	A1	A0	A0	A0	A0		A0	A0	A0	A0	A0	A0	A0	A0	A0	
Governer Used		Mechanical	Mechanical	Mechanical	Electronic	Electronic	Electronic	Electronic		Electronic	Electronic	Electronic	Electronic	Electronic	Electronic	Electronic	Electronic	Electronic	
Alternator	"LEROYSOMER/CROMPTON GREAVES/STAMFORD" MAKE SINGLE BEARING, 415 V, 50 Hz, 0.8 PF, BRUSH LESS & SELF EXCITED, IP 23 ENCLOSURE, CLASS H/H INSULATION																		
<b>SDG Details</b>																			
Power Rating**	kVA	12.5	15	20	25	30	40	45		50	60	82.5	100	125	160	180	200	250	
Electric Power@0.8pf	kWe	10	12	16	20	24	32	36		40	48	66	80	100	128	144	160	200	
Rated Current	Amp	17.3	20.85	27.8	34.7	41.7	55.6	62.5		69.5	83.4	114.7	139	173.7	222.4	250	278	347	
Fuel Tank Capacity	Liters	65	65	65	80	80	100	100		155	155	190	190	220	255	255	350	350	
Battery Capacity	AH	90	90	90	90	90	90	90		90	90	90	90	90	110	110	110	110	
System DC Voltage	Volt	12	12	12	12	12	12	12		12	12	12	12	12	12	12	24	24	
Oil Change Period		600Hrs/1Yr	600Hrs/1Yr	600Hrs/1Yr	500Hrs/1Yr	500Hrs/1Yr	750Hrs/1Yr	750Hrs/1Yr		750Hrs/1Yr	750Hrs/1Yr	750Hrs/1Yr	750Hrs/1Yr	750Hrs/1Yr	750Hrs/1Yr	750Hrs/1Yr	750Hrs/1Yr	750Hrs/1Yr	
Lube Oil specification	Gulf Leypower XLE									Gulf Leypower XLE									
Generator Controller		GC 902	GC 902	GC 902	GC 1206	GC 1206	GC 1206	GC 1206		GC 1206	GC 1206	GC 1206	GC 1206	GC 1206	GC 1206	GC 1206	GC 1206	GC 1206	
Exhaust After Treatment System (EATS)		EGR + DOC	EGR + DOC	EGR + DOC	EGR + DOC	EGR + DOC	EGR + DOC	EGR + DOC		EGR + DOC	EGR + DOC	DOC + SCR	DOC + SCR	DOC + SCR	DOC + SCR	DOC + SCR	DOC + SCR	DOC + SCR	
Adblue Tank	-	-	-	-	-	-	-	-		-	-	24L	24L	24L	24L	24L	24L	24L	
SDG Size L	mm	1760	1760	1750	2000	2000	2500	2500		2700	2700	2850	2850	3100	3500	3500	3800	3800	
W	mm	900	900	900	1050	1050	1200	1200		1200	1200	1300	1300	1300	1400	1400	1550	1550	
H (Including Base)	mm	1200	1200	1200	1250	1250	1450	1450		1510	1510	1610	1610	1610	1850	1850	1800	1800	
DG Weight approx.	Kg	670	676	725	750	755	1090	1100		1350	1380	1417	1900	2050	2210	2280	3550	3700	

- Single phase DG Sets available upto 82.5kVA only.
- DG Sets conform to standard reference conditions as per BS 5514/ISO3046/ISO8528.
- kW rating considering at 0.8PF.
- All data are as per NTP test conditions. The specifically designed, powder coated enclosures meets the latest noise norms of 75dBA at 1 meter distance.
- Water cooled, four stroke diesel engines, Sensors to safe guard DG against faults like low oil pressure and high water temperature.
- AMF/Auto synchronizing panel can be designed & supplied by us as per your site requirement/ BOQ.
- AMF Shall be inbuilt in the canopy for DG
- \*Dimensions and specifications are only indicative. Product innovation is a continuous process, hence data given is subject to change without any prior notice.
- Fuel consumption of DG set is considering specific gravity of fuel as 0.85 with tolerance of ±5%.

SALIENT FEATURES

- Inbuilt Silencer
- AMF inbuilt in the canopy
- Highly Fuel Efficient
- International Design
- Electronic Governor\*
- Longer Service Interval

\* From 25 kVA onwards

## SILENT GENSETS



# POWER TO ALL

Presenting the state-of-the art range of CSH Generating Sets

powered by AL CPCB-IV+ Engines

Diesel Generating Sets: 12.5 kVA ~250 kVA



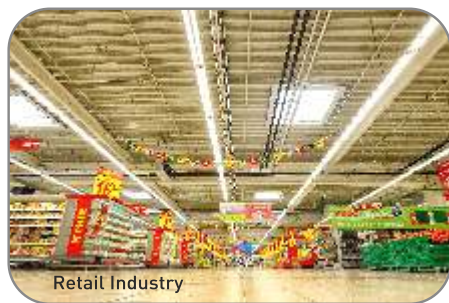
Agriculture & Aquaculture



Hospitality Industry



Infrastructure Industry



Retail Industry



Education Industry



Health Industries



Automotive & Auto components Industry



Textile & Garment Industry



IT/ITES Industry-Data Centre



Buildings Commercial & Residential



Banking & Insurance Industry



Petrol Pump



Substation, Transmission & Distribution



Road & Infra Tolls



Restaurant Industry

## Service Dealer Networks

100+ Dealer Network & CSH Sales Dealer Across India

Three Tier After Sales Service

- TIER 1** CSH Dealer
- TIER 2** CSH Engineers
- TIER 3** Engine / Alternator Co. Engineer

CSH has a service support network through its dealers to support entire range of DG sets.



### CSH Customer Care:

**Tel.: +91 88600 74544**

**Email: [crm.csh@cshpower.co.in](mailto:crm.csh@cshpower.co.in)**

CSH Representative / Dealer

### CSH Power Himoinsa Pvt. Ltd.

(Formerly known as C&S Himoinsa Pvt. Ltd.)

Head Office: 222, Okhla Industrial Estate, Phase -III, New Delhi -110020

Tel.: 011-6904 9000-09, 8860074544, e-mail: [crm.csh@cshpower.co.in](mailto:crm.csh@cshpower.co.in)

Works: 12-A, Sector -9, Integrated Industrial Estate, Pantnagar, Uttarakhand - 263153, India

Web. [www.cshpower.co.in](http://www.cshpower.co.in)

### Regional Offices:

Chandigarh, Jaipur, Indore, Lucknow, Dehradun, Patna, Ranchi, Guwahati

### Branches:

Faridabad, Karnal, Ludhiana, Pathankot, Jammu, Kota, Udaipur, Alwar, Jodhpur, Bikaner, Bhopal, Jabalpur, Gwalior, Agra, Meerut, Kanpur, Allahabad, Aligarh, Varanasi, Gorakhpur, Gaya, Deogarh, Ramgarh, Muzzafarpur, Tinsukia

